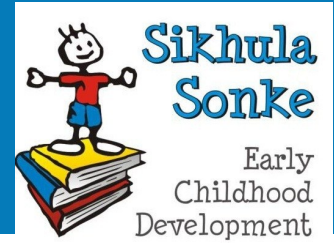


ANNUAL REPORT

2013-2014



Sakh'umtwana sakh'isizwe. We grow a child, we grow a nation.



Sikhula Sonke Early Childhood Development strives to create a nurturing and stimulating environment for young children to grow, in safe and protected surroundings, with strong Christian values and beliefs as a foundation.



South Africa today

Despite much political change, South Africa still has young children who survive in extreme poverty and unbearable living conditions, with very limited ECD opportunities.

As a nation, we are far from achieving the United Nations Millennium Development Goals of eradicating extreme poverty and hunger, and achieving universal primary education. Many children in urban areas experience challenges in receiving good early childhood development services; the impact can be seen in children who fail to thrive as they advance within South Africa's education system.

Strategic partnerships

Our partnership with the Independent Development Trust (IDT) through the Expanded Public Works Programme (EPWP) made it possible to increase our reach to families and young children in more areas of Khayelitsha, including Drift Sands.

This partnership also brought some young stars to Sikhula Sonke; they first came to volunteer, then received stipends from the IDT; later many were offered formal employment in our organisation.

The Social Crime Prevention Partners – a group that includes VPUU, Sikhula Sonke, UWC Legal Aid, Mosaic-Simelela, Heads Up, Grassroots Soccer, Love Life and City Police – have contributed significantly to the welfare of children.

It is truly amazing what can happen when different stakeholders agree that children are the future of our country and work collaboratively towards a common purpose.

Positioning our services

Sikhula Sonke's provision of ECD services, development and investment in partnerships, and our commitment to the young children of Khayelitsha, has been and is making an enormous contribution to the development of children and achieving the Millennium Development Goals.



Sikhula Sonke Early Childhood Development

Offices & Training Centre: 35-903 Cephe Crescent, Harare Square, Khayelitsha, 7784, Cape Town

Tel: +27 (81) 258 7359

Website: www.sikhulasonke.org.za | Facebook: SikhulaSonkeECD

"I think that the best thing we can do for our children is to allow them to do things for themselves, allow them to be strong, allow them to experience life on their own terms, allow them to take the subway ... let them be better people, let them believe more in themselves." C. JoyBell C.

Emthonjeni Programme

This programme aims to reduce the number of children who are not exposed to formal early childhood development experiences because of socio-economic challenges.

Utilising taps in informal settlements as a meeting place, the Emthonjeni team facilitated activities like recruiting/registering the children and child-focused learning interactions (ECD stimulation), and hosted library visits. As trust was built, children were invited on field trips and caregivers/parents invited to attend cluster workshops.

During interaction times the children were exposed to different learning themes and activities designed to help them develop holistically and gain confidence. At cluster workshops caregivers learnt about the importance of hygiene, immunisation, head injuries, children's rights and other early childhood development principles.

The Emthonjeni team performed very well this year and we are grateful and encouraged by their commitment.



2013/2014 was one of our busiest, most demanding, exhausting and rewarding years. On behalf of the Sikhula Sonke operations team, I would like to extend our heartfelt appreciation to all of our stakeholders who made it possible to provide our services. Without you, many children would have missed the crucial years of early learning and development and our task would have been unfinished.
Phambili ngophuhliso lwabantwana.
Phambili! God Bless Khayelitsha.
Thembi Nxesi
Community Development Manager

| QUARTER | TOTAL CHILD ATTENDEES | GIRLS | BOYS | SPECIAL NEEDS | NO OF SESSIONS | REFERRAL CASES | ACHIEVED CASES |
|---------|-----------------------|-------|------|---------------|----------------|----------------|----------------|
| 1st | 111 | 54 | 57 | 0 | 12 | 0 | 0 |
| 2nd | 242 | 120 | 122 | 2 | 24 | 2 | 1 |
| 3rd | 315 | 159 | 146 | 0 | 28 | 1 | 1 |
| 4th | 323 | 161 | 162 | 1 | 14 | 1 | 1 |
| TOTALS | 991 | 494 | 487 | 3 | 78 | 3 | 3 |



THIS YEAR ...

- 1 500 children benefited from the training, coaching and support programme
- +/- 250 children were reached through FCM programmes
- 92 children graduated at the ECD joint graduation at Sikhula Sonke
- 50 IDT (EPWP) volunteers were hired by Sikhula Sonke
- 80% of registered learners finished the Basic Coaching & Support Course
- One new Emthonjeni site was opened at Monwabisi Park
- More than 10 ECD courses were attended by Sikhula Sonke staff including QIS (Connect Network), Alcohol consumption & screening (VPUU), Children & Safety (Red Cross), PDT training

Family & Community Motivator Programme

The FCM programme expanded during the year from 50 families and one site (Enkanini) to 200 families and four sites (Site C, Site B and Drift Sands) through the strategic partnership with the Independent Development Trust through EPWP programmes. This has allowed Sikhula Sonke to expand its services to areas where they are needed most, areas like Site C, Site B and Drift Sands.

FCM was implemented through activities like recruiting door-to-door and referrals by graduate families; the programme provided stimulating learning interactions and transference of ECD skills through individual home visits and cluster workshops. Children who had social and/or special needs were referred to relevant institutions; many of these referrals were successful but others are still in progress. Children were also assessed for readiness to progress to primary school. A total of 32 children graduated to mainstream schooling in 2013, mostly moving into local primary schools.

The introduction of the FCM Programme shows resounding success in making a practical difference to families who participate. FCM is running at capacity and we see that the need and the take-up is much greater than originally anticipated.

| QUARTER | FAMILIES REACHED | CHILDREN REACHED | PLANNED VISITS | ACTUAL VISITS | DISABLED CHILDREN | REFERRED CASES | ACHIEVED CASES |
|---------|------------------|------------------|----------------|---------------|-------------------|----------------|----------------|
| 1st | 63 | 76 | 126 | 116 | 0 | 8 | 0 |
| 2nd | 175 | 200 | 320 | 200 | 7 | 6 | 3 |
| 3rd | 218 | 269 | 1092 | 700 | 12 | 60 | 19 |
| 4th | 218 | 309 | 868 | 500 | 5 | 19 | 15 |

Growth as an organisation

Our affiliation with Connect Network has enabled us to make significant strides in growth, promoting child protection, ensuring the well-being of women and young children, collaborating with network members and more. This has led to a deeper understanding of the significant role that community structures like street committees, ward development forums and ward councillors play in driving the agenda for ECD.

Appreciation for our funders and team

We applaud the commitment and dedication of our fantastic staff; much has been achieved this past year through the investment of their time, energy, hard work and personal sacrifice.

Our thanks to the management team, board and all those on the ground who worked so hard against such tough odds to keep the Sikhula Sonke light burning so brightly.

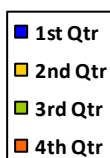
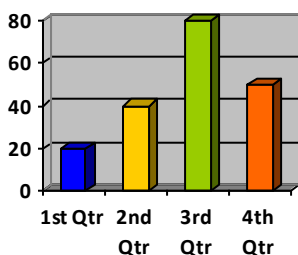
Thank you to all of our funders, supporters and stakeholders who have provided finances, knowledge and a variety of different resources towards the growth of our much-loved organisation and the upliftment of Khayelitsha's community.

Let's continue to work together towards the empowerment of women and development of our young children in order to ensure a brighter, safer and more sustainable future.

Mdebuka Mthwazi (Executive Director) & Evan Torrance (Chairman)

Funda Udlale Toy Library

This resource to the community is enjoyed by many! The toy library programme initially attracted only Emthonjeni children, but was soon recognised and utilised by preschools and the broader community. Trends show that the library is typically quieter in the first / fourth quarters (holidays, school functions) with usage peaking in the 3rd quarter.



Solid operations

Despite the ever-changing ECD training landscape, we continue to successfully train and develop ECD practitioners in the local community. The Emthonjeni and Family & Community Motivator (FCM) programmes are also doing exceptionally well.



Coaching & Support Programme

This programme involves activities like registration of learners, orientation of learners and principals, coaching and support of centres and graduation of practitioners and children. At the start of the year 60 practitioners registered to participate in the programme; 48 practitioners actually completed the course. Approximately 80% of the practitioners were deemed competent.

In October, the Economic Policy and Research Institute contracted Sikhula Sonke to do a national audit of Khayelitsha's ECD centres. Despite several challenges, the coaching team completed the project, auditing 329 centres (29 of which were discovered as centres that were not known to the Department of Social Development). Of the preschools audited, 100 preschools showed interest in enrolling their practitioners in Sikhula Sonke's basic teacher training programme. Many centres were also able to put formal ECD policies and procedures into place.



SIKHULA SONKE... ADDRESSING THE NEED FOR QUALITY EARLY CHILDHOOD DEVELOPMENT SINCE 2001

GRATEFUL THANKS TO THE GENEROUS DONORS WHO SUPPORT OUR WORK

ApexHi | Cape Union Mart
Childwick Trust - Jim Joel Foundation
Claremont Rotary
City of Cape Town: Social Development
& ECD Directorate
Eskom Development Fund
First National Bank Fund
Metropolitan | EB Grove Helping Hand Trust
Kidz Development Academy
National Lottery Development Trust Fund
Percy Fox Foundation | RB Hagart Trust
River's Edge Community Church
Rolf-Stefan Nussbaum Foundation
Violence Prevention Through Urban Upgrade

and
the dedicated individuals who
give regularly



WE RECOGNISE & SALUTE THE VALUABLE WORK AND SACRIFICE OF OUR PARTNERS

Khayelitsha ECD Forum | LoveLife | Nal'ibali
City of Cape Town: Social Development & ECD Directorate
Mosaic-Simelela | Grassroots Soccer | HeadsUp
Violence Prevention Through Urban Upgrade
Connect Network | City & Metro Police

and especially
the many ECD practitioners, fieldworkers,
teachers, headmasters, parents
and caregivers who serve
so faithfully with all that
they have, daily.



SISO has made me realise the importance of basic education in our community. It has created a new dawn in ECD and gave hope to those future leaders. HALALA SISO, HALALA.

Noluvuyo

What Sikhula Sonke is doing is amazing. Changing people's lives is a great thing. To work with those vulnerable children is really a blessing. It bring hope to the caregivers is a good thing. Rise SISO, RISE. **Pumeza**

I am so proud of the SISO organization, I was trained here, now I am training practitioners in early childhood development. Thank you for helping poor families in Khayelitsha and also for creating jobs for poor families. **Zingisa**

Sikhula Sonke made me realise how to change someone's life to become a better person. SISO brings basic education to those families who cannot afford to take their children to ECD centres. SISO is more than an early childhood development, it is a hope to those who cannot cope. **Ntombovuyo**

Sikhula Sonke gave me an opportunity to work with vulnerable families. I have learnt many things; thank you. **Yandiswa**

Sikhula Sonke ECD programme has made my heart grow fonder for children and the situations I come across as an FCM made me stronger. **Siphokazi**

Sikhula Sonke is a platform I ever experienced when I see the number of children who are not attending ECD skill... when I see smiles from those little faces, it really melts my heart, ncooooo!!!! **Nompumelelo**

Sikhula Sonke groomed me personally. I am now able to stand tall and face the world, through the knowledge, information and the confidence that I gained, every day I learn something new. **Winkie**

Sikhula Sonke has been a stepping stone toward my future career. This organisation has helped me discover my talent and I have learnt many more skills. Thank you for the opportunities. **Portia**



Sikhula Sonke Early Childhood Development

Directors: S. Dapula D. Hancox J. Glanville J. Klein G. Mbali M. Mthwazi E. Torrance

Established: 2001

Non Profit Company Number: 2003/010956/08

NPO Registration Number: 030-217 NPO

SARS PBO Registration Number: 930 004 377

Website: www.sikhulasonke.org.za

Facebook: SikhulaSonkeECD